



# SPRING 2024 SCHEDULING MANAGEMENT



# HOW DOES SCHEDULING WORK?

NHSL prepares a draft schedule for all divisions. The draft schedule is sent to club officials and 'location managers' who coordinate their home matches with opponents. This method is used to allow clubs autonomy to meet their needs and the needs of families in creating an equitable schedule for all involved.

GotSport can only accept so many 'blackout dates' without disrupting the entire schedule and overriding other requested off dates. Additionally, clubs are in the best position to determine their own field availability.



# SCHEDULING TIMELINE

**1**

**3/21**

Preliminary schedule released to location managers with access to location manager forms

**2**

**3/27**

Schedules must be completed by teams / clubs by 5:00 p.m. -- Schedule then provided by league to Referee Assignor

**3**

**3/27+**

Any requested game changes after the schedule is set and sent to assignors must be completed through game change forms found here:  
<https://soccernh.com/nh-soccer-league/game-changes/>

**4**

**4/6**

Season Kickoff



# SCHEDULING TIPS

- Be respectful and cooperative.
- Teams can move games with agreement of opponent – no unilateral movement of matches
- There are extra weekends 4/6 and 6/8 to get games in.
- All days work – Weeknights work too (not just Fridays)!
- **Make sure you stack matches at your fields for refs**
- Stand alone matches can be harder to cover – if you must they should be early morning or late afternoon

# STACKING TIPS



- **U8-U10 – 70 MINUTES BETWEEN KICKOFFS**
- **U11-U12 – 75 MINUTES BETWEEN KICKOFFS**
- **U13-U14 – 90 MINUTES BETWEEN KICKOFFS**
- **U15-U16 – 105 MINUTES BETWEEN KICKOFFS**
- **U17-U19 – 120 MINUTES BETWEEN KICKOFFS**





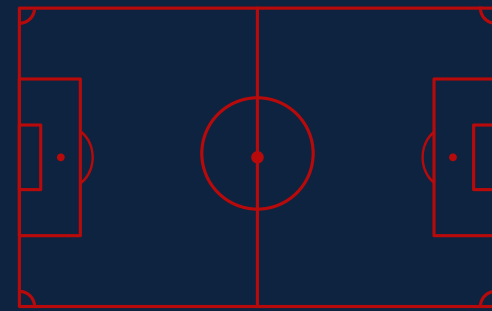
# PLAYOFFS

- Playoffs are scheduled for the weekend of June 14-16.
- There may be Friday evening matches
- We will communicate with High School Divisions about possible week night matches to avoid graduations and proms.
- Most matches are played at the NHSA Complex in Pembroke, NH.
- Some semi-final matches may be played at a neutral location to accommodate for space and time.
- The full playoff schedule will be released in the coming weeks.
- If the division has a team that plays an extra match, one match is not counted towards playoffs - that match will be found here: <https://soccernh.com/nh-soccer-league/schedule/playoffs/>



# LOCATION MANAGERS

**UPDATE CONTACT INFO**



**BE COURTEOUS**


**[GOOGLE SHEET OF LOCATION MANAGERS – CLICK ME!](#)**



# NEED ASSISTANCE?

GotSport:

<https://gotsport.zendesk.com/hc/en-us>

 **603-626-9686**

 **Director@NHSoccerLeague.com**

 **NHAdmin@soccernh.org**

 **www.NHSoccerLeague.com**

