



# SPRING 2025 IN-SEASON SCHEDULING & WEATHER

# HOW DOES RE-SCHEDULING WORK?

The NHSL uses forms to collect and aggregate dates and data for any matches that need to be adjusted after the schedule has been provided to referee assignors.

The forms centralize reschedule requests for consideration and can be accessed by the league and the referee assignors and then allow for the updating of the public schedule.

Changes impact many parties that have pre-planned for the event and require a lot of adjustment from families, clubs, and referees, so best efforts to get matches played as scheduled is appreciated by all.



# RE-SCHEDULING TIMELINES & FEE POLICIES

1

## MORE THAN 7 DAYS

Matches that need to be adjusted that are more than 7 days out are accompanied by a \$35 fee

2

## 7 DAYS OR LESS

Matches that need to be adjusted that are less than 7 days out are accompanied by a \$100 fee and **changes must be submitted by Tuesday at noon of the match week**

3

## FORFEITURES

Matches that are forfeited are accompanied by a \$300 fee. A no show is a forfeit as well as change requests after Tuesday at noon.

4

## WEATHER RELATED FIELD CLOSURES

Rescheduling matches that are postponed due to weather related field closures that were appropriately noticed have no accompanying fee when rescheduled within 72 hours.

# RE- SCHEDULING TIPS

- Make sure you have a mechanism for tracking player attendance to ensure appropriate numbers at your matches and to avoid late change requests.
- Any requested game change must be cleared with the opposing team and requires submission with the new date, time, location.
- Stack matches when rescheduling if possible to ensure referee coverage. Removing a match from the middle of a stack may impact multiple matches

## STACKING REMINDERS



- **U8-U10 – 70 MINUTES BETWEEN KICKOFFS**
- **U11-U12 – 75 MINUTES BETWEEN KICKOFFS**
- **U13-U14 – 90 MINUTES BETWEEN KICKOFFS**
- **U15-U16 – 105 MINUTES BETWEEN KICKOFFS**
- **U17-U19 – 120 MINUTES BETWEEN KICKOFFS**





# GAME CHANGE FORMS

click below to access



## MORE THAN 7 DAYS

[More than 7 Days out Game Change Request Form](#)

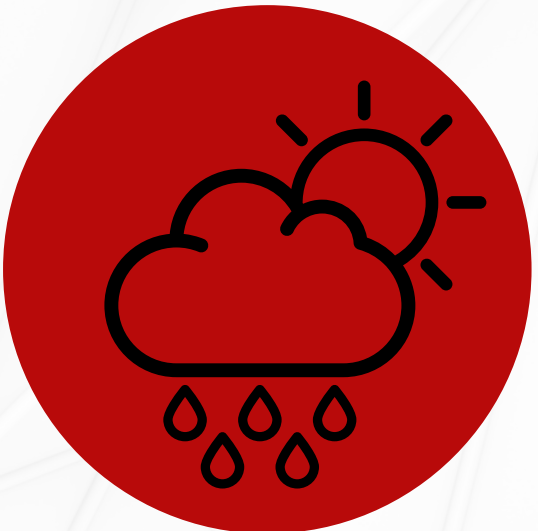
[Complete only after clearing new match with opponent](#)



## 7 DAYS OR LESS

[7 Days or less Game Change Request Form](#)

[Complete only after clearing new date with opponent](#)



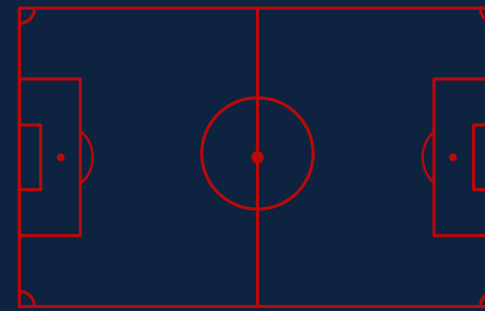
## WEATHER RESET

[Weather Game Change / Reschedule Form](#)

[Complete only after clearing new date with opponet](#)

# WEEKLY DEADLINE FOR GAME CHANGES

Tuesday at Noon



**NO CHANGES AFTER THIS TIME**

Please check in with your team and make any requests timely as late changes result in disruption to opponents, families, referees, and added fees

# WEATHER POLICY

When   
Thunder  
Roars,  
Go Indoors!

**STOP all activities.**

Seek shelter in a substantial building  
or hard-topped vehicle.

Wait 30 minutes after storm to  
resume activities.

[www.lightningsafety.noaa.gov](http://www.lightningsafety.noaa.gov)



# WEATHER NOTICES FIELD CLOSURES

- Home Clubs are responsible for notifying everyone of field closures related to weather by following the below steps:
  - Complete the Field Closure Form: [FORM FOR CLOSURE](#)
  - Email Opposing Coach listed on Public Schedule
  - Text Opposing Coach listed on Public Schedule
- All teams involved on a day where weather is questionable should check the field closure link here: [FIELD CLOSURE LIST FOR WEATHER ISSUES](#)
- Communicate early and often as to status of impending weather and likelihood of play or closure / cancellation.
- **Clubs must complete the field closure / match cancellation more than two (2) hours posted to the sheet or they will be charged referee fees.**





# NEED ASSISTANCE?

League Resources and all Game Change and Weather Notices and Forms can be found here:

<https://soccernh.com/nh-soccer-league/game-changes/>

 **603-626-9686**

 **Director@NHSoccerLeague.com**

 **NHAdmin@soccernh.org**

 **www.NHSoccerLeague.com**

